



# SCAN

Stocksfield Community  
Association News

**June 2026**



## **Stocksfield Community Association**

Mount View Terrace, Stocksfield, NE43 7HL

Patron: Rt. Hon. Viscount Allendale

Charity No. 1139996

### **Contact Details**

Community Centre Manager      Lisa Lewins

**Tel:**            **07900 120368 (mobile)**

**Email:**        **admin@stocksfieldca.org.uk**

**Website:**    **www.stocksfieldca.org.uk**

**www.northumberlandvillagehalls.org.uk/stocksfield-community-centre**

**Facebook: Stocksfield Community Association**

**(also known as SICA)**

### **Office Opening Hours.**

The office opening hours are flexible. If you would like to visit the office in person, please make contact via phone call or email (see above) to arrange a convenient time.

### **Normally the office will be open every:**

**Thursday from 9.00am –12noon**

**Friday from 9:00am - 11:00am**

#### Officials

Chair

Mrs B Braysher

Vice-Chair

Minutes Secretary

Treasurer

Honorary Vice President

Mrs J Harrison

Mrs K Kirkland

Mr P Westbury (Acting)

Mrs B Bouch

**Does anyone love riding out but doesn't have a pony right now?**

I am offering free riding on a quiet pony accompanied by myself on another pony during the weekdays and some summer weekends. Mostly off road and no galloping or jumping. Some experience essential plus correct riding gear. 01661 843296

**The Annual General Meeting of Stocksfield Community Association** will take place on: **Tuesday 14<sup>th</sup> July 2026 at 7.30pm** in the Community Centre

Members of the board of trustees for the coming year will be elected at this meeting. All current members are eligible to stand for election. Members interested in joining the board of trustees can find out more information and/or collect a nomination form from the Community Association office.

Nomination forms must be received at the Community Association office by the 24<sup>th</sup> June 2026.

**Parish churches of St Peter's Bywell,  
St George's Mickley and St John's, Stocksfield**

For info & enquiries, please

Email: [stocksfieldchurchofengland@gmail.com](mailto:stocksfieldchurchofengland@gmail.com) or ring our church wardens:

Bywell- Mrs Jessie Reisner (01661 843136)

Mickley- Mrs Joy Marshall (01661 842418)

**Stocksfield Quaker Meeting.**

Now meeting in person but observing COVID guidelines.

Further information from Caroline Westgate, telephone: 01434604747

**Save the Date – Sunday 21st June**

**Bywell Castle Garden Open Day**

**From 12 Noon – 6PM**



Lord and Lady Allendale will be opening their beautiful garden in aid of Stocksfield Community Association.

**Come and wander around the fabulous grounds with a riverside setting.**

**Unwind with live music, take a stroll through the wildflower and woodland gardens.**

**We are sure you will enjoy this special day.**

**Bywell castle open day tickets:**

**Adults £5 / Children under 12 free!**

**What's on:**

**Live Band 'Jeanie and the Jollyboys', playing all day.**

**Food stands by North Acomb farm shop. The Feathers Inn serving pizzas and paella in the old castle.**

**Gin & Tonia serving a variety of drinks.**

**The Honey store.**

**Ices, Vanilla Treat cakes and teas.**

**Bottle Tombola, prize Tombola**

**and other exciting stalls.**

**NEW This Year:**

**Tyne Valley Taproom selling a variety of beer.**

**Megs Welds & Woodwork.**

**Tipsy sips**

**Fun children's dog show at 12 Noon (see poster on next page)**

**Pony grooming and Alpaca walks**

**Plenty of seating & disabled access / toilet.**

**Dogs on leads welcome.**

**Easy parking.**

**A Great day out – on Father's day – everyone welcome!**



**DOGS LIFE**

Happy Dogs, Happy Hoomans.

**BYWELL CASTLE GARDEN  
CHILDRENS FUN DOG SHOW**



**21st June at 12 noon** Entry £2 per dog

**12.00 Agility fun**

**12.30. Sit, stay and walkaway timed competition**

**12.45 Judging of waggiest tale**, best behaved child and dog combo, best handler and much more.

All children to be accompanied by an adult (and a dog)



### **Request for bottle donation for prizes.**

The Bywell Castle Garden Open Day for this year is being organized in aid of Stocksfield Community Association, and one of the events is a bottle tombola. To help us achieve this we would greatly appreciate donations of bottles for example a drink (alcohol / non-alcohol), toiletries or anything else that is in a bottle.

For health and safety reasons all donations must be unopened with the seal intact.

Please bring any donations to the office either Tuesday or Thursday mornings or Friday before 11:00am.

Thank you for supporting your community centre.

### **May Board Meeting**

The board discussed the upcoming Bywell Castle Open Garden event, which is taking place on Sunday 21<sup>st</sup> June. We are grateful that this year Lady Allendale is holding the event in aid of Stocksfield Community Association. Several of the trustees are involved in planning the event, and other volunteers will be helping out over the weekend.

The extra storage batteries funded by a grant from the National Lottery are due to be installed on 28<sup>th</sup> May, so should be working to store more of the energy generated by our solar panels by the time you read this. A representative of the Awards for All England Environment programme will be visiting us at the beginning of June to find out a bit more about this project and our Community Association.

Other property matters discussed included redecoration of the first floor rooms, which we plan to do at the end of July. The floor of the main hall also needs attention and is scheduled to be cleaned and re-varnished in August. Both of these will be a community effort involving trustees and volunteers.

The annual policy review took place during May, and the updated policies have been signed off. The Financial, Safeguarding, Data Protection and Health and Safety policies, together with the Register of Systems, are reviewed annually. Other policies, such as the No Smoking and Conflict of Interest policies, are on a four year review cycle, but may be updated sooner to reflect changes in requirements and procedures.

# Bywell Arts Festival

## Accessible art, tasty teas, festival favourites!

### Bywell Arts Festival: Friday 26 – Sunday 28 June 2026

If you're looking for a great family outing this summer that will put smiles on everyone's faces without costing a fortune, then why not come to the Bywell Arts Festival – a selling exhibition of original paintings by artists from around the region.

The ancient Bywell churches of St Peter's and St Andrew's (barely 50m apart) once again provide the venues for this popular annual exhibition displaying over 200 original paintings by around 50 artists. Both churches have an interesting history and are well worth a visit in their own right; but from Friday 26 to Sunday 28 June, they provide a perfect backdrop for some stunning original art.

The framed artworks are offered at a range of prices, with some established artists selling work for hundreds of pounds but there are many smaller works on display under £100 with some for as little as £20. Whether you are interested in buying or just want to have a look around and soak up the atmosphere, you are equally welcome to come and enjoy the exhibition.

**Friday 26 June 7-9pm:** Be among the first to view the exhibition and purchase art while enjoying a glass of wine or beer on a summer's evening as you stroll between the churches.

**Saturday 27 and Sunday 28 June 11am-5pm:** Enjoy the art exhibition, perhaps treat yourself to a piece of original art, and indulge in some excellent refreshments, including delicious cream teas, served in a marquee next to St Peter's church, and a Pimms Bar (open from 2pm) also selling wine, beer and non-alcoholic drinks.

The rural setting is idyllic and peaceful, and inside each church, visitors are met with a warm welcome from our Festival volunteers.

Cakes, plants and books are for sale on stalls just outside St Peter's, and don't forget to buy a ticket for the raffle, which has some fabulous prizes. Ample free parking and toilet facilities are close to the churches.

If you are purchasing art, you will be able to pay by card, however we welcome cash for smaller purchases. Just another reason to add this to your summer outings diary.

**St Peter's and St Andrew's churches, NE43 7AD, a 15 minute walk from Stocksfield Rail Station and No 10 bus route.**



## **Stocksfield Parish Council are looking for new Parish Councillors.**

Parish Councils are the first tier of local government and play an essential role in our local community.

Stocksfield Parish Council is responsible for important local services including areas such as:

- ★ Play Areas
- ★ Sports Fields
- ★ The Parish Defibrillator network
- ★ Bus Shelters, Bins, Benches etc.
- ★ Planted Areas and green spaces

The Council meets once a month, on the evening of the second Monday of each month (typically). The role is voluntary and requires a small time commitment and offers the opportunity to contribute meaningfully to local life.

By serving as a Councillor, you can play a direct part in shaping the future of Stocksfield.

For further information or an informal discussion, please contact Gemma, the Parish Clerk.

 01661 844667

 07908 601619

 [clerk@stocksfield-pc.gov.uk](mailto:clerk@stocksfield-pc.gov.uk)



**From play areas to  
planters, help us keep  
our village thriving**

 Stocksfield  
Parish  
Council

Become a Parish Councillor, to find out more call: 07908 601619

# **Stocksfield Methodist Church**

Mount View Terrace, Stocksfield NE43 7HL

Other than Sunday services, we have a busy little church during the rest of the week. You would be warmly welcomed at any of these regular activities.

**CRAFT CHURCH** on the 2nd and 4th Mondays of the month at 2pm....bring along your sewing or knitting and enjoy friendly chat over a cuppa.

**MIDWEEK FELLOWSHIP** with interesting speakers on the 2nd and 4th Wednesdays of the month at 2pm

**FILM NIGHTS** on the last Friday of each month at 7pm , with ice cream in the interval! (Excluding Dec, June and July)

**MONTHLY** coffee mornings in aid of charity, first Saturday of each month from 10.30-12 noon. Popular and friendly.

**CAFE CONNECT**....family gatherings on Sundays from 4pm -5.30pm , every other month. Craft, games, afternoon tea.

**3 GENERATORS** ....regular meetings of our group of young people, looking at Minecraft Church etc.

## STOCKSFIELD SCOTTISH COUNTRY DANCE CLUB

If you enjoy dancing The Eightsome Reel and Dashing White Sergeant

Why not try some more advanced dances of this type.

Every Tuesday night From February to December 7.30 until 9.30 ish

Beginners class 6.30 to 7.30

The Baptist Church, Main Road, Stocksfield

Good fun; Friendly people; Great exercise mental and physical;

Come on your own.

Contact: Rosemary Newton; Tel. 01661 843163; [newtons39@gmail.com](mailto:newtons39@gmail.com)

Marion Brown: Tel. 07552 636656

## Friendly Fridays.

Friendly Fridays are now meeting at Café 7NN in Stocksfield Cricket Club from 10:30am until Noon every Friday.

All you need to do is turn up and be sure of a warm welcome, delicious tea or coffee and other tempting goodies!

Come along and catch up with friends or meet someone new – hope to see you there.

Tel Melna 844040 or Edna 843081 if you would like to know more.



# **STOCKSFIELD PLANTS AND** **GARDENS SOCIETY**

## **Stocksfield Plants and Gardens Society**

Blooming Doorsteps Competition.

This year's theme is Flower Power, just one category for adults this year, which you can interpret how you wish.



You can make your pot as big or small as you like and as colourful or subtle as you want. Extra points will be given for inclusion of perennials, pollinator friendly plants, native plants and herbs or other edible plants.

The competition is kindly being supported by Tyne Valley Garden Centre in Mickley who are offering a first prize voucher of £50 for use in the centre, £25 voucher second prize and £10 for third prize.

The Miniature Garden theme last year generated some lovely inventive pots much enjoyed by the judges so we are repeating the theme again this year. Plant a miniature garden or landscape for fairies, dinosaurs or other favourite small toys. There will be prizes and all junior entrants will get a packet of seeds to continue their growing.

The closing date for entries is June 25th

Judging will take place in the second week of July . The judges are members of the SP&GS committee.

The competition is open to all residents of Stocksfield, Mickley and Bywell and members of SP&GS wherever they live.

## Pop Up Plant Sale Sunday 7th June

This year we are only holding one big plant sale which will be in the grounds of St John's Church, Meadowfield Road from 2pm-4pm. (Please note the departure from our usual day and time)

We can accept cash and card sales. Bring lots of bags or boxes to transport your purchases home.

The Church Hall will be open and serving delicious refreshments so bring your friends and family along for a lovely social afternoon.

Members can enjoy local garden visits (sometimes with afternoon tea) and a variety of coach trips during the summer months. This year we have trips planned to Carolside Garden in the Scottish Borders, Helmsley Walled Garden, and the Yorkshire Lavender Farm all at discounted prices.

Membership is only £10 per person for the year. From October to May we also hold monthly talks in SICA on a wide range of horticultural topics which are free to members.

Further details and membership forms can be found on our website [stocksfeldplantsandgardens.com](http://stocksfeldplantsandgardens.com) or email the committee on [stocksfeldpg@gmail.com](mailto:stocksfeldpg@gmail.com)

**Extra free event – Flower power – Free talk on creating gorgeous summer colour containers for your garden**

# FLOWER POWER

**FREE CONTAINER  
DEMO/TALK ON CREATING  
GORGEIOUS SUMMER  
COLOUR FOR YOUR GARDEN**

**SUNDAY 31 MAY  
2PM  
STOCKSFIELD  
COMMUNITY CENTRE  
ALL WELCOME**

STOCKSFIELD PLANTS & GARDENS SOCIETY



Learn Painting, Drawing  
and Creative Skills

## Learn to Paint & Draw

at Stocksfield Community Centre



### **10 week Art Course at SICA**

**7-9pm Wednesdays from 16.9.26**

**10am-12 Thursdays from 17.9.26**

**£180 - 20 hrs tuition**

**Stocksfield Community Association**

**Info and booking [www.nikiblack.co.uk](http://www.nikiblack.co.uk)**

[www.nikiblack.co.uk](http://www.nikiblack.co.uk)

# STOCKSFIELD TUESDAY CLUB

**Meets every Tuesday at the Community Centre from**

**10.00 am until 2.00 pm.**

Our friendly group enjoys a variety of social activities, including carpet bowls in the main hall, or just come along for a chat with friends over coffee / tea and / or lunch.

A hot, freshly cooked midday meal is served at a cost of just £6 and meals can be delivered to your home at no extra cost.

**All are welcome and that really does mean everyone!**

If you want more information or would like to book a meal then contact Christine Hooks on 01661 844863

Meals must be booked in advance by the day before.

## June Menu

2 June 2026	Chicken casserole	Eve's pudding
9 June 2026	Sausages & onion gravy	Fruit tart & cream
16 June 2026	Pork casserole	Chocolate sponge & custard
23 June 2026	Cheese & onion pie	Fruit salad
30 June 2026	Chicken & mushroom casserole	Cheesecake

Stocksfield Tuesday Club is always looking for volunteers to join our friendly team – you would only need to be on the rota once each month.

If you would like to use this space to advertise your business or group please contact us on [admin@stocksfeldca.org.uk](mailto:admin@stocksfeldca.org.uk) and see our pricing at the back of the magazine



*Caring for your pets as if they were our pets*

**Stocksfeld: 01661 843259**  
[www.orchardhousevets.com](http://www.orchardhousevets.com)



**PCs@Home**  
**Call Mark & Sarah**  
**01661 898180**

[www.pcsathome.co.uk](http://www.pcsathome.co.uk)

Find us on Facebook

**@pcsatomestocksfeld PC Services & Repairs; Virus & Hacking Removals; Broadband, Wi-Fi Surveys & Advice, Home & Smart TV Networking; PC Data Backups & NAS Servers; Home & Remote Support; New PCs and Laptops Located in Stocksfeld offering advice, home visits & collection/delivery.**

**"Helping you to be @home with your IT"**

### **BRANCH END SERVICE STATION**

Main Road  
Stocksfeld  
Tel: 01661842124



### ***We try to have what you want!***

*Post Office, Newspapers & magazines, fresh dairy produce, daily bread & pie bakes, grocery, frozen & ready meals & off licence.*



### **Painting & Decorating by John Eden**

**No job too big or too small. Competitive prices. Quick, clean, reliable service. "Accredited Tradesman" of over 55's forum.**

**2 Otter Burn Way, Prudhoe  
Tel: (01661) 832576 or 07726 954935  
\*\* 15% discount for OAP's \*\***

## **Stocksfield Parish Council Notes**

**Members of the public are warmly invited to attend Parish Council meetings and are always given an opportunity at the beginning of the meeting to speak about things that matter to them.**

**Meetings take place at Stocksfield Community Centre.**

**Dates for next meeting :**

**Monday 8<sup>TH</sup> June**

**PARISH COUNCIL PHONE: 01661 844667**

**Website: [www.stocksfield-pc.gov.uk](http://www.stocksfield-pc.gov.uk)**

**Email: [clerk@stocksfield-pc.gov.uk](mailto:clerk@stocksfield-pc.gov.uk)**



**Home care services across the Tyne Valley area.**

**Services include Home Help, personal care, companionship including enabling.**

**Our services are for 1 hour minimum**

**If you or a loved one requires care, please visit our website [homeinstead/tynevalley](http://homeinstead/tynevalley) or contact us on 01434 693700**

**If you are looking for a new job in care, please contact our recruitment team on 01434 693700**

## Hexham Textile and Stitch

We are a friendly group of stitchers who meet at the Torch Centre in Hexham on the second Saturday of each month, from 1.00pm-4.00pm.

We have speakers and workshops, and there is always someone willing to help you with any problems you might have.

You will be surprised at what we use in embroidery these days to get the desired effects, such as heat guns and soldering irons, but we still do the traditional stitching as well.

No experience needed, just a desire to learn.

Contact Jessie Reisner on 01661 843136 or Rosemary Newton on 01661 843163, or just come along.

## Stocksfield Baptist Church

**Minister: Rev. Aileen Innes**

**Email:** [enquiries@stocksfieldbaptistchurch.net](mailto:enquiries@stocksfieldbaptistchurch.net)

Services at 10 am on Sundays; all are welcome

Stay & Play for toddlers and carers, Tuesdays 10 - 11:30am



STOCKSFIELD LOCAL HISTORY SOCIETY

## 2026 PROGRAMME

*Now on summer break.*

*Meetings are planned to resume in September*

## Wellness Therapeutics Physiotherapy, St Matthew's Wellness Centre Prudhoe



A centre providing Physiotherapy, Beauty and Massage Therapy and a wide range of classes such as: Yoga, Pilates, Baby and Toddler Yoga, Men's Pilates, Sound Baths and Wellbeing workshops.

For up to date information go to: [www.stmattswellness.co.uk](http://www.stmattswellness.co.uk) or our Facebook and Instagram pages: St Matthew's Wellness Centre

For physio call 07947444179 or email [kelly@wellnesstherapeutics.co.uk](mailto:kelly@wellnesstherapeutics.co.uk)

## Stocksfield Wellbeing Walks

Why not come and join us for a short walk on Monday mornings? We are a small group of friendly people who meet in the Cricket Club car park every Monday at 10.00am and walk for about an hour (at the most an hour and a half, on mainly flat, easy ground).

At the end of the walk we usually go to Stocksfield Cricket Club for tea/coffee and a chat. The walks are free and are led by trained volunteers, supported by The Ramblers Association.

**We'd love to see you so do come along with suitable footwear.**

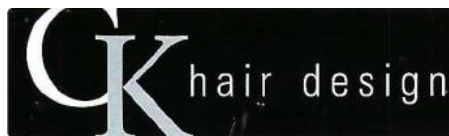
Date	Location of walk	Grade
Jun 1	Fords	1-2
Jun 8	Broomley Woods railway loop	2
Jun 15	Ovington	2
Jun 22	Wylam – Hagg Bank	2 (steps optional)
June 29	Broomley fell / Healey church	2

**STEVE MELVILLE JOINERY**  
**CITY & GUILDS FULLY QUALIFIED JOINER.**  
**EXPERIENCED IN ALL TYPES OF**  
**PROPERTY REPAIRS & MAINTENANCE,**  
**INCLUDING HISTORIC & LISTED.**  
**ALL ASPECTS OF HOUSEHOLD & GARDEN**  
**JOINERY UNDERTAKEN.**  
**BESPOKE FITTED FURNITURE**  
**DESIGNED & BUILT.**

Email: [samelville@btinternet.com](mailto:samelville@btinternet.com)

Mobile: 07800 913049

43 Riding Dene, Mickley  
Stocksfield, NE43 7DQ



**Unisex Hair Salon**  
**Kimberley House**  
**Kimberley Gardens**  
**Stocksfield**  
**NE43 7JH**  
**Tel: 01661 843 745**

**David Ballantyne**  
**Tree Services**

**Tree Removal**  
**Firewood**  
**Fully Insured**  
**Based in Stocksfield**  
**07973832474**

**G & S Electricals**  
**14 Front Street**  
**Prudhoe**

**Extensive range of domestic appliances,**  
**spares & accessories.**  
**Vacuum repairs.**  
**Competitive prices.**  
**Fast, friendly service.**  
**Free local delivery.**  
**Tel: 01661 836696**

**Prudhoe & District u3a**

We are a friendly organisation offering daytime meetings for talks, coffee mornings, and a wide variety of interest groups from Art Appreciation to Walking. Our principle is enjoying shared learning, with everyone contributing. For further information please visit [u3asites.org.uk/prudhoe](http://u3asites.org.uk/prudhoe)  
Place: Prudhoe Parish Hall/other local venues  
Organiser: Felicity email: [chairmanprudhoeu3a@yahoo.com](mailto:chairmanprudhoeu3a@yahoo.com)



**Ron Robinson Roofing**  
**Re-roofing (tile and slate)**  
**General roof repairs**  
**Roof-line and Guttering**  
**Flat roofing systems - Guaranteed up to**  
**40 Years**  
**Tel: 01661 843832**  
**Email: [info@rrroofing.co.uk](mailto:info@rrroofing.co.uk)**  
**[www.ronrobinsonroofing.co.uk](http://www.ronrobinsonroofing.co.uk)**

**Aerobics & Pilates Classes at Stocksfield Community Centre**  
**Contact Mary Huggins on 07775 916013**

**Low Impact Aerobics/Body Toning– Legs, Bums & Tums**

**Monday Evenings at 6.30– 7.45pm**

**Step Aerobics (All Levels)**

**Tuesday Evenings at 6– 7pm**

**Pilates using Stability Balls (Balls provided)**

**Thursday evenings at 6.30– 7.45pm**

**Low Impact Aerobics (bums & tums)**

**Friday mornings at 9.30– 10.00am**

**Pilates using Stability Balls**

**Friday mornings at 10– 10.45am**



**£4.50 per class ~ All levels welcome.**

 **Hadrian**  
**Window Systems Ltd**  
part of the hadrian group



**PVCU WINDOWS,  
SLIDING SASH  
WINDOWS & DOORS**

**ALUMINIUM BI-  
FOLD &  
SLIDING DOORS**

**ALUMINIUM  
ROOF  
LANTERNS**

**COMPOSITE  
DOORS**

 **sales@hadrian-group.co.uk**

 **0191 414 8090**





## **Stocksfield Retired Men's Association**

Meetings on Thursdays in the hall of  
Stocksfield Baptist Church (rear hall)  
Open to all (semi) retired men in the area.

No annual subscription.

Lady guests also welcome to all meetings

Refreshments from 9:30, talks at 10:30am

Attendance fee £3

**4<sup>th</sup> June. Linden Stephenson:**

The history of world coins

**18<sup>th</sup> June, Alan Rispin:**

The development of the Newcastle Metro

Contact: [stocksfieldretiredmen@gmail.com](mailto:stocksfieldretiredmen@gmail.com)

### **What does the Community Association do?**

- It provides local residents with the opportunity and facilities to enjoy a wide range of leisure, recreational and educational facilities.
- It produces this monthly magazine to keep members informed about activities at the Community Centre and elsewhere in the parish.
- It hires out rooms.
- It maintains close links with the Parish and County Councils.
- It is affiliated to Community Action Northumberland and a member of the West Northumberland Community Building Consortium.

Please contact the Community Centre Office if you are interested in becoming involved in any way with your community association. (07900 120368)

# Stocksfield Community Association

Stocksfield Community Centre is owned and managed by Stocksfield

Community Association which is a charitable incorporated organisation.

The day to day running of the Community Centre is carried out by the Community Centre Manager whilst the trustees of the Community Association oversee building maintenance, finance, communication, new projects and staffing matters. The trustees are elected by members of the Association at Annual General Meetings at which all members of the Association are both eligible to vote and stand for election.

## Types of Membership and Subscriptions 2025

Individual	£ 10.00	Couple	£13.00
Over 60 & under 25	£ 7.00	Over 60 & under 25	£12.00
Family	£13.00		

(Family membership includes all children under 18)

## Room Hire

Various rooms, the main hall and the kitchen are available for hire to members and to the general public for community-based activities, including weddings, private parties, children's parties, etc.

Whenever you consider staging an event at the Centre, please contact the Community Centre Manager as soon as possible in order to place your booking and discuss arrangements. The Community Centre Manager will advise you on any licensing or other legal requirements. As these can take some time to arrange, please make bookings well in advance.

For anyone holding a private event at home Tables and chairs are available for hire from the Centre.

**Remember the Community Centre is there for you - please make use of it.**

## What's on at Stocksfield Community Centre

### Monday:

10:30am – 12:30pm	Artventurers
2:00pm – 3:30pm	Badminton
5:30pm - 6:30pm	Puppy School
6:30pm – 7:45pm	Low impact Aerobics Body toning

### Tuesday:

9:30am – 11:30am	Computer Club
10:30am – 2:00pm	Tuesday Club
6:00pm – 7:00pm	Step Class – all levels
6:00pm – 7:00pm	Puppy School

### Wednesday:

6:00pm – 7:00pm	Puppy School
-----------------	--------------

### Thursday:

6:30pm – 7:45pm	Pilates using Stability Balls
7:00pm - 9:00pm	Bridge
8:00pm – 9:30pm	Badminton

### Friday:

9:30am – 10:45am	Low impact aerobics (legs, bums & tums!)
------------------	--

## Stocksfield Community Association

### Affiliated Members

Stocksfield Tuesday Club

Stocksfield Players

Plants and Gardens

Additional information about Affiliations (contacts and activities) can be obtained from the Centre notice board, website or the Community Centre Manager.

**To advertise in SCAN**  
**(prices from April 2026 to March 2027)**

**Annual (10 issues) 1/6 page £60, 1/3 page £120, 1/2 page £150**

**Single advert: 1/6 page £10, 1/3 page £20, 1/2 page £25**

**Note that publicity for Stocksfield groups and events is free of charge.**

As well as the printing of your advert in 10 issues, you will also receive a free electronic version of the magazine.

You will also receive single membership of the community centre.

The person named on the email will be the person who is named on the membership.

Should you wish to name a different person, please do let us know.

Membership will give you the benefit of a 25% discount on any private booking (such as a children's party or other event).

Should you wish to opt out of membership, you can email us to let us know.

Should you wish to also receive a physical paper copy of SCAN, there will be a further small charge which is the same as the membership fee published in the magazine and will cover all 10 issues.